

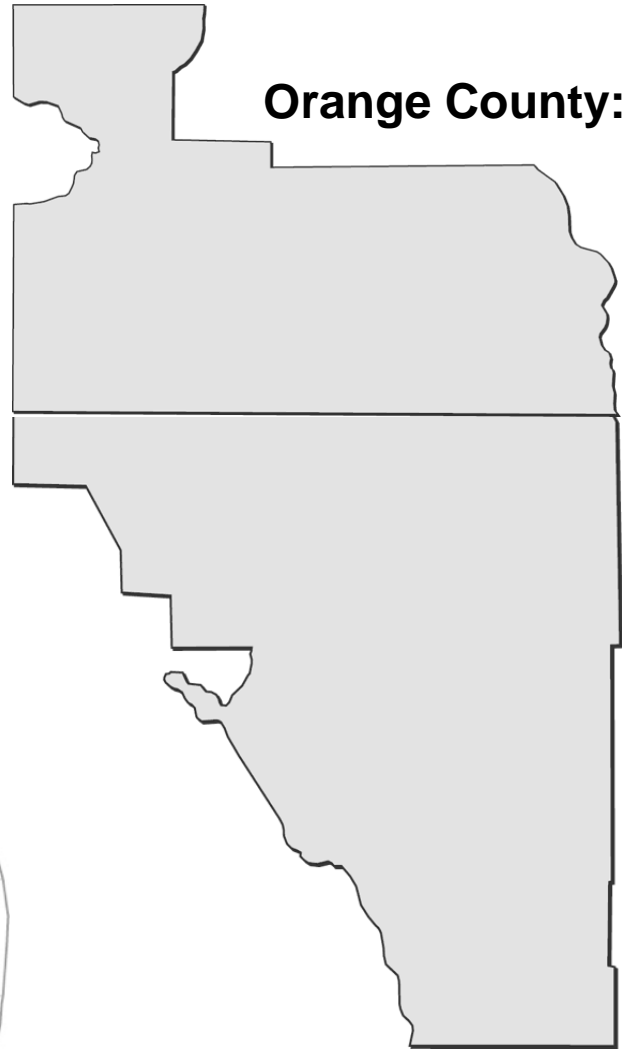
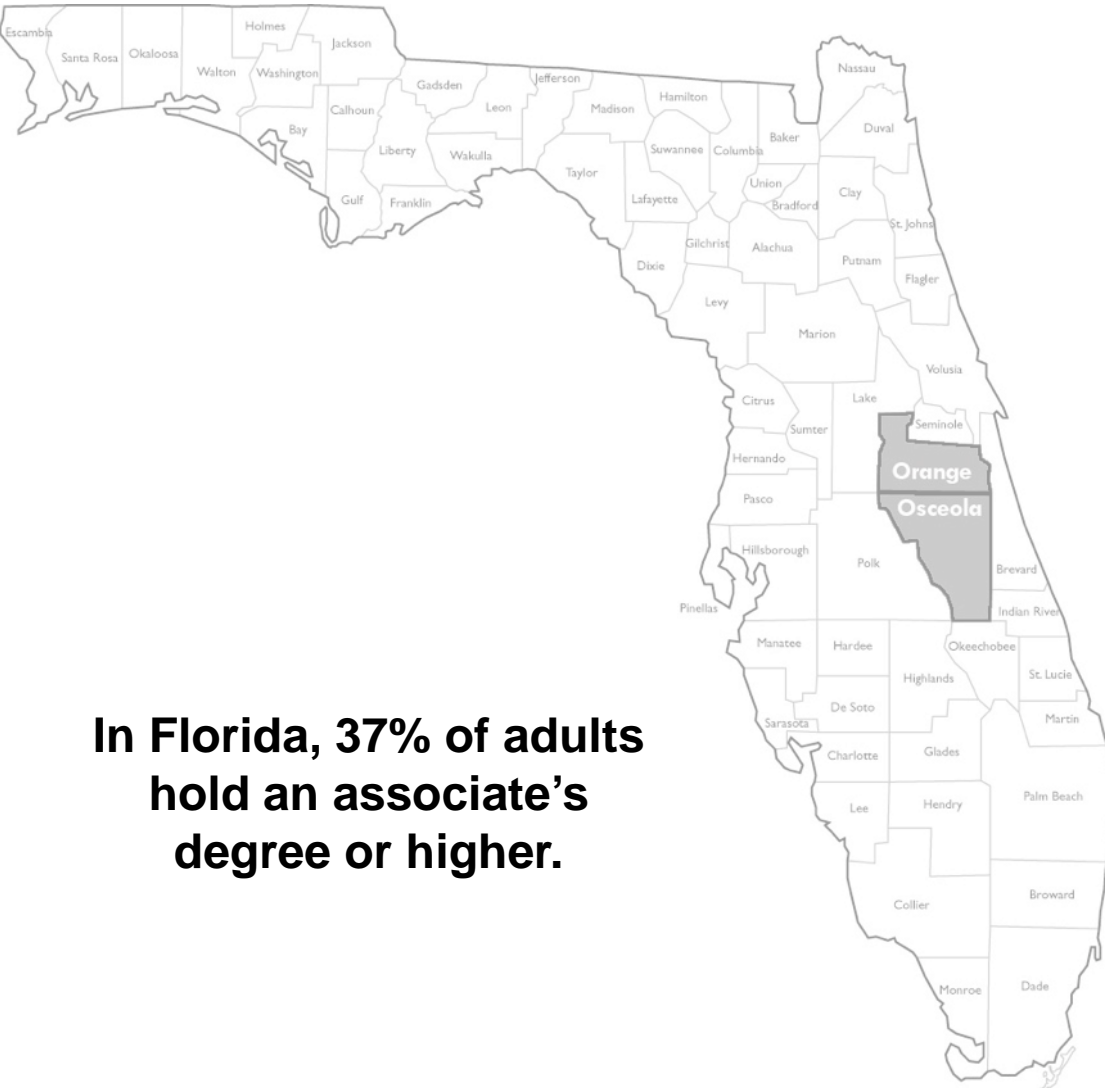
Access and Opportunity: Preparing the Workforce of Osceola County



February 2018

VALENCIA COLLEGE

Educational Attainment Levels of Adults 25 and Over



Orange County: 42%

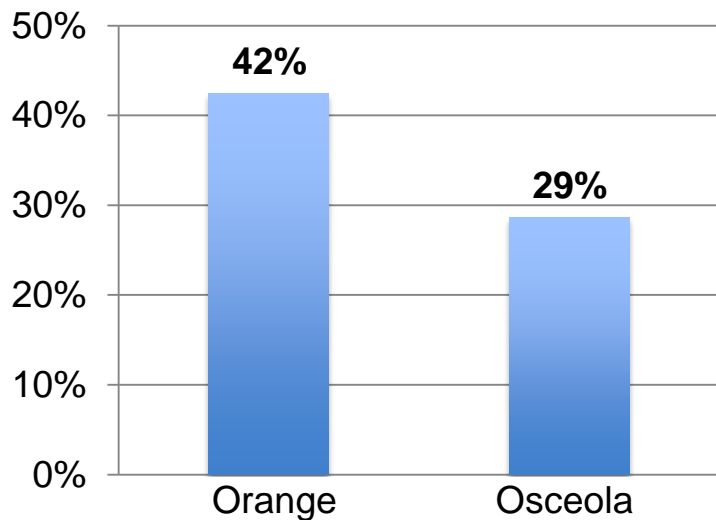
Osceola County: 29%

In Florida, 37% of adults hold an associate's degree or higher.

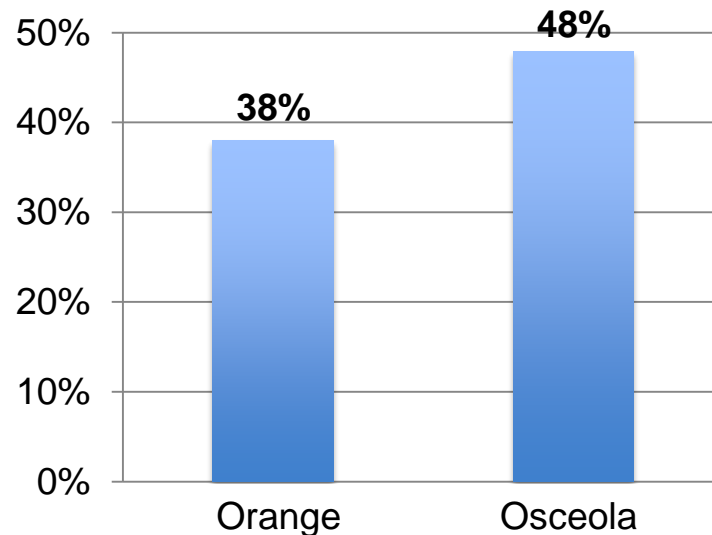
Educational Attainment Levels of Adults 25 and Over

	Orange County	Osceola County
Less than High School Diploma	12.3%	14.3%
High School Diploma	25.7%	33.6%
Some College	19.5%	23.5%
Associate's Degree	10.5%	9.9%
Bachelor's Degree	21.3%	13.3%
Graduate Degree	10.6%	5.4%

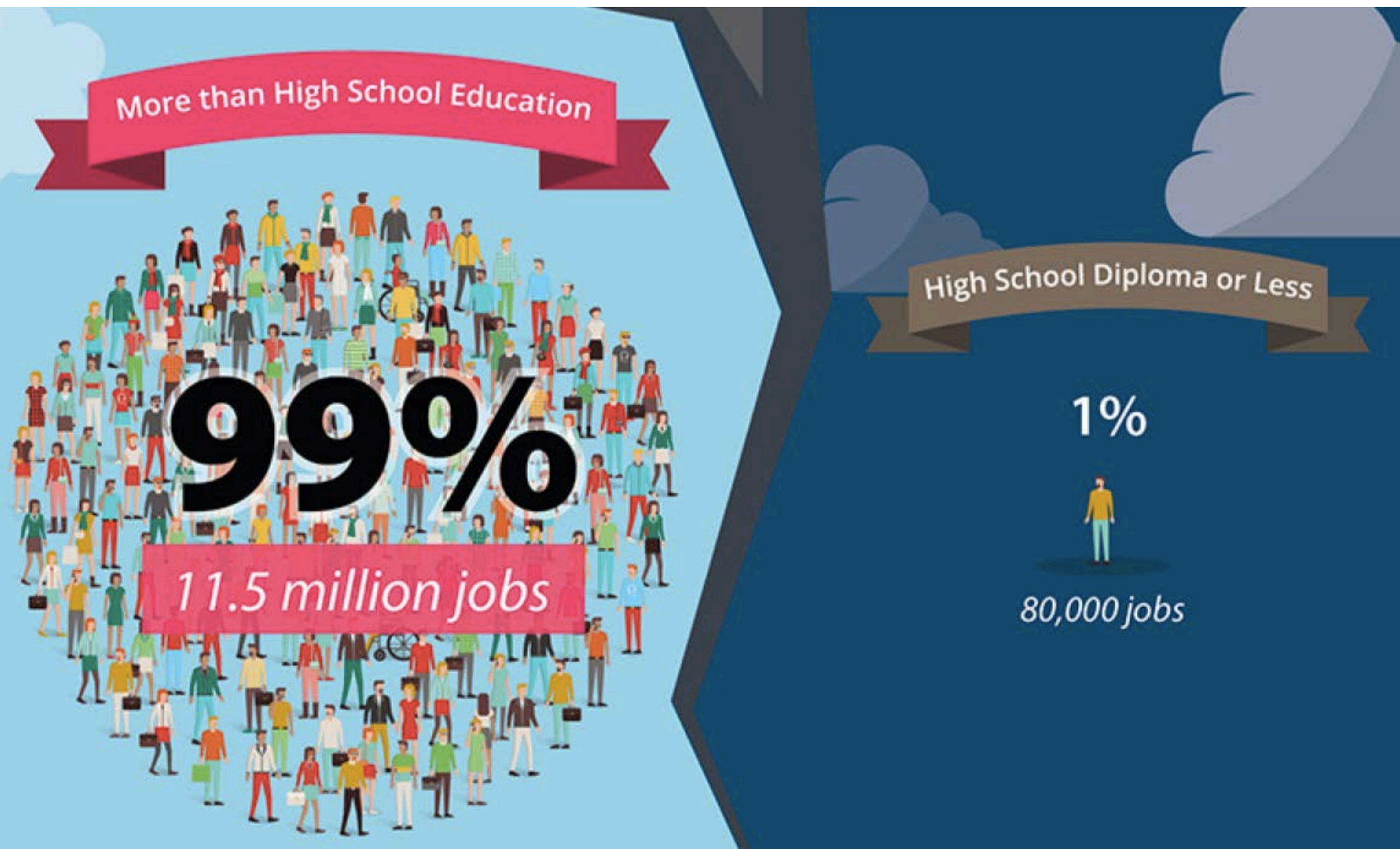
Associate's Degree or Higher



High School Diploma or Less



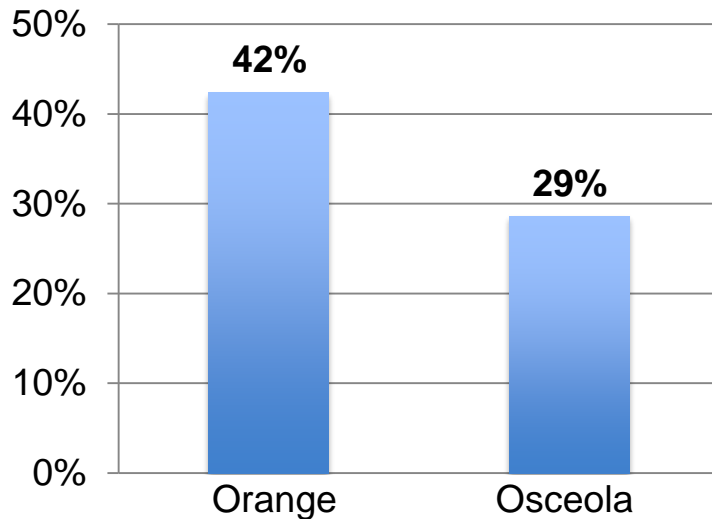
America's Divided Recovery: College Haves and Have-Nots



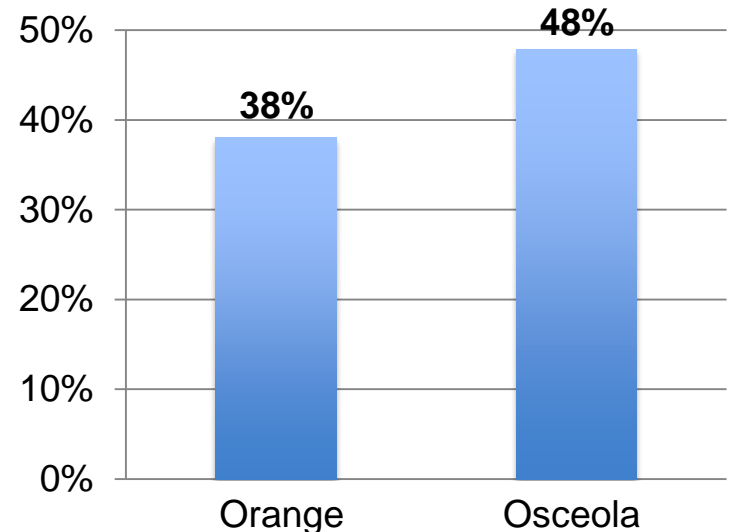
Educational Attainment Levels of Adults 25 and Over

	Orange County	Osceola County
Less than High School Diploma	12.3%	14.3%
High School Diploma	25.7%	33.6%
Some College	19.5%	23.5%
Associate's Degree	10.5%	9.9%
Bachelor's Degree	21.3%	13.3%
Graduate Degree	10.6%	5.4%

Associate's Degree or Higher



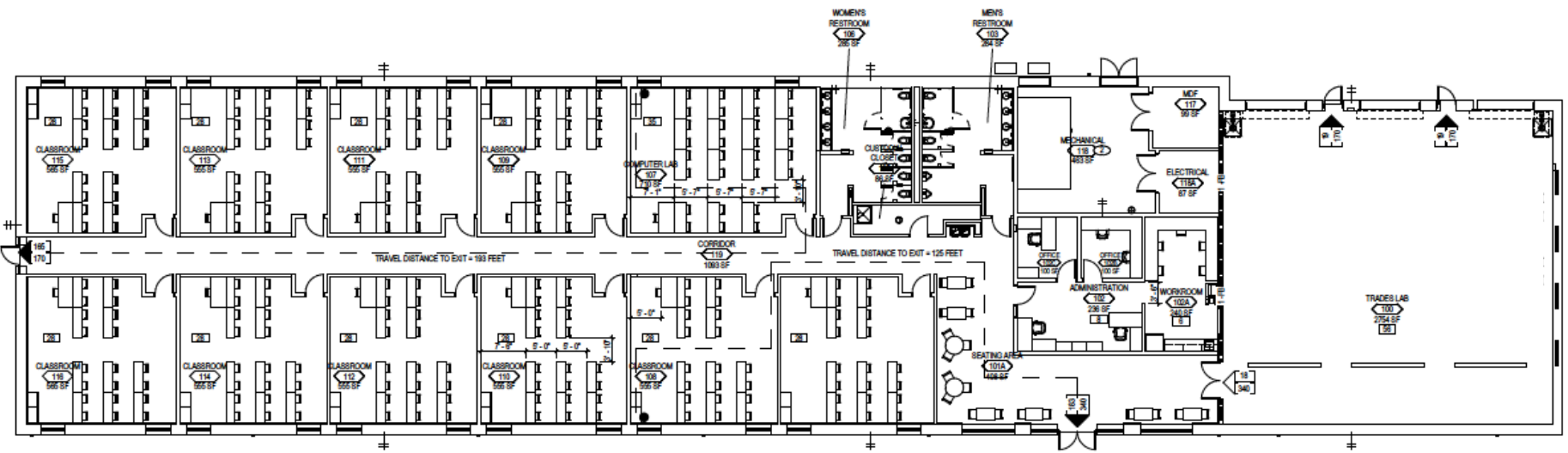
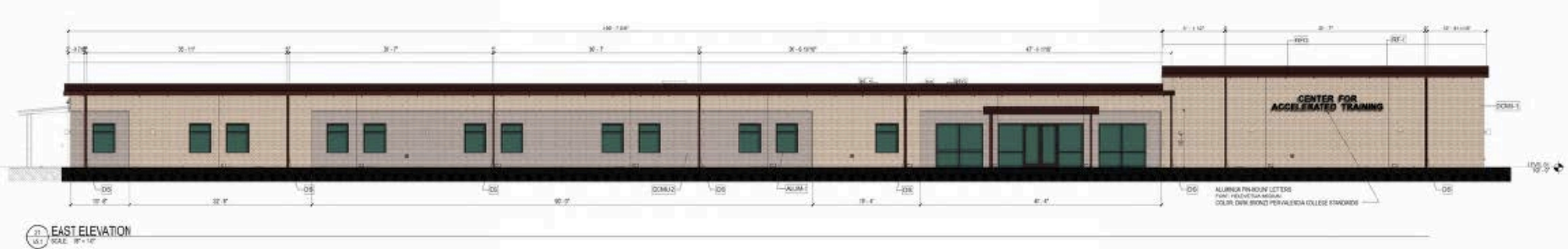
High School Diploma or Less



Osceola Campus Master Plan



Center for Accelerated Training (CAT)



Center for Accelerated Training (CAT)

Accelerated Training Programs:

- Core Construction
- Heavy Equipment
- Transportation Logistics
- Warehouse Packaging
- Clinical Medical Assisting
- Private Security



Language Programs:

- ESOL
- Intensive English
- English Pronunciation
- Conversational Spanish
- Conversational Portuguese



Careers in Industry and Technology (CIT) Building



Careers in Industry and Technology (CIT) Building

A.S. Degree Programs:

- Residential Property Management
- Engineering Technology
- Hospitality and Tourism Management
- Criminal Justice Technology



Accelerated Training Programs:

- Service Technician
- Mechatronics



Access and Opportunity: Preparing the Workforce of Osceola County



February 2018

VALENCIA COLLEGE