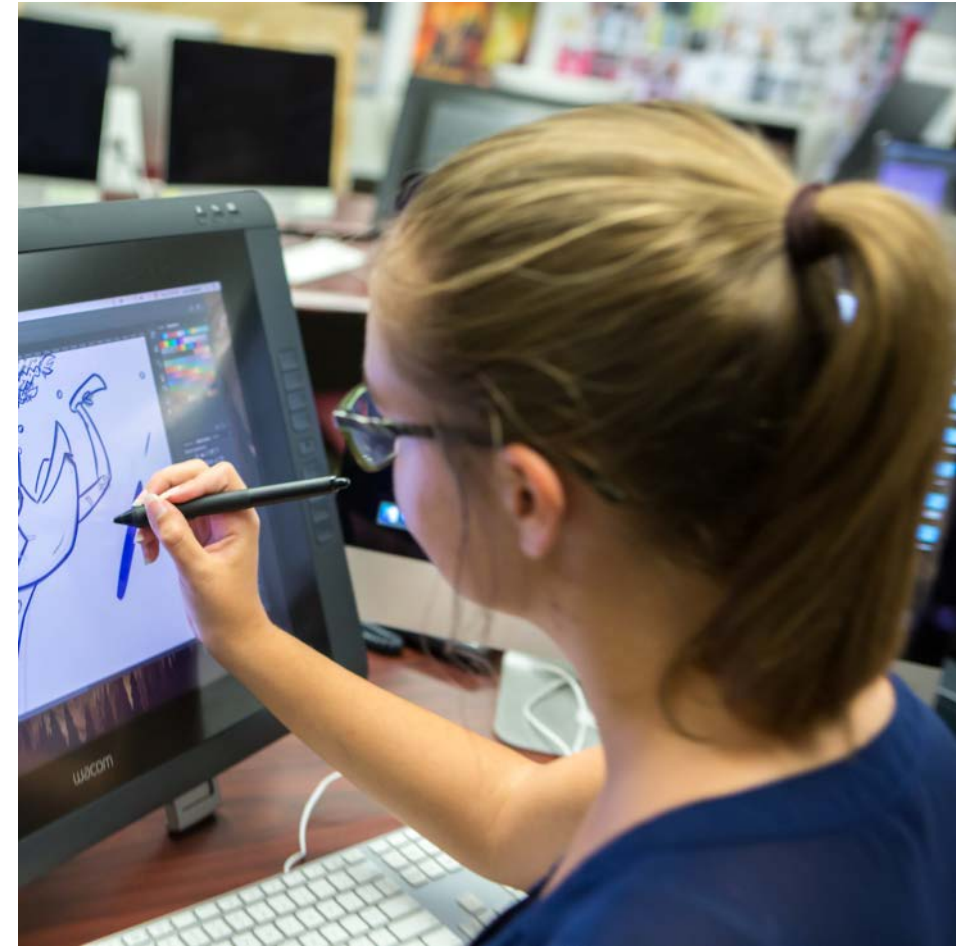
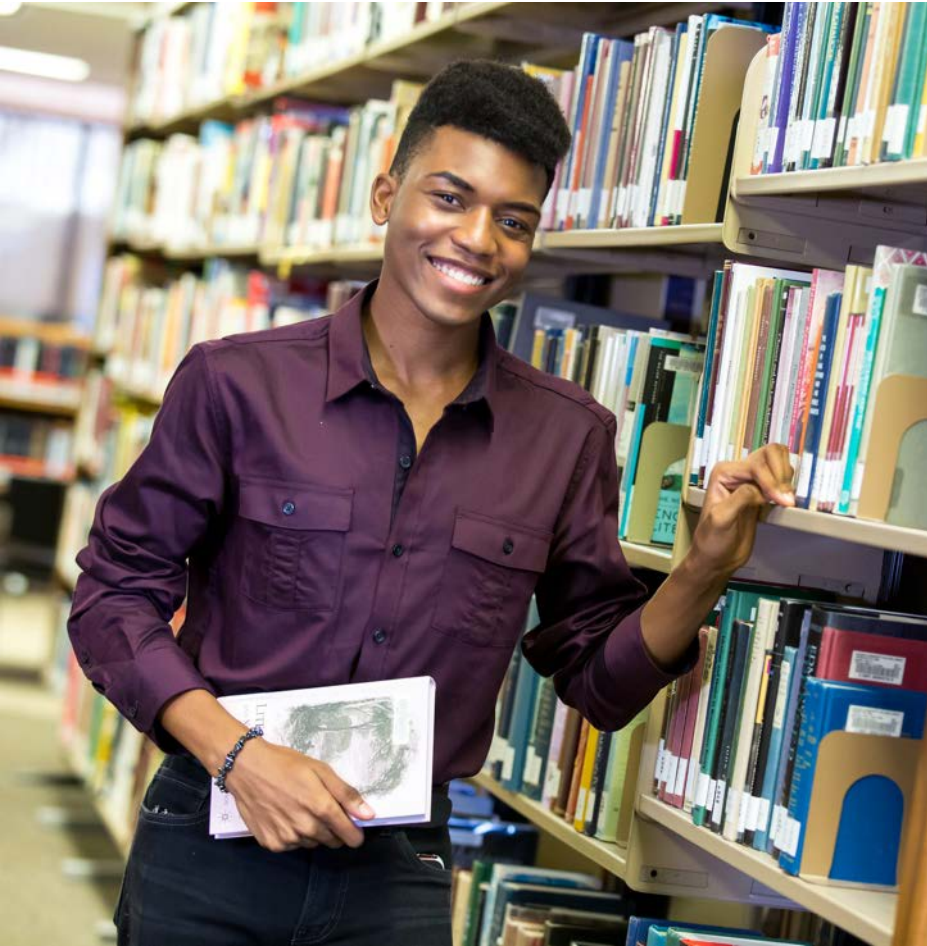


# Inventory of Program Offerings



**A.A.**

**Associate in Arts**

**28,298**



**A.S.**

**Associate in Science**

**7,887**



**B.S.**

**Bachelor of Science**

**B.A.S.**

**Bachelor of Applied Science**

**1,636**



**AST**

**Accelerated Skills Training**

**~500 annually**



# A.A. Associate in Arts

## Top Meta-Majors at Valencia:

**Health Sciences (20.6%)**

**Business (18.3%)**

**STEM (16.7%)**

**Arts, Humanities,  
Communication, Design (10.2%)**

**Social and Behavioral Sciences,  
Human Services (4.9%)**

**DiRECT  
CONNECT  
TO UCF**



## Top Areas of Study at UCF:

**Business (22.6%)**

**Health Professions (12.9%)**

**Psychology (9.4%)**

**Education (7.5%)**

**Engineering (7.3%)**

# A.S. Associate in Science

## Areas of Study

- Arts, Entertainment, and Communication
- Business, Management, and Administration
- Engineering Technology
- Health Sciences
- Hospitality & Culinary
- Information Technology
- Law, Public Safety, and Security
- Plant Science and Horticulture

## A.S. Graduates

- Placement Rate: 93-95%
- Average Annual Earnings: ~\$45,000

## Highest Enrolled Programs:

**Business Administration (2,650)**

**Nursing (887)**

**Criminal Justice (837)**

**Hospitality and Tourism Management (744)**

**Graphic & Interactive Design (587)**

**Sound & Music Technology (533)**

**Computer Information Technology (528)**

**B.S.**  
**B.A.S.**

# **Bachelor of Science** **Bachelor of Applied Science**



**Radiologic and Imaging Sciences**

**Electrical and Computer Engineering Technology**

**Cardiopulmonary Sciences**

**Nursing**

**Business and Organizational Leadership**

**Computing Technology and Software Development**

**AST**

# Accelerated Skills Training



## Program Areas:

**Advanced Manufacturing**

**Construction**

**Healthcare**

**Transportation and Logistics**

- **Graduation Rate: 95%**
- **Full-Time Job Placement Rate: 81%**

# Questions?

