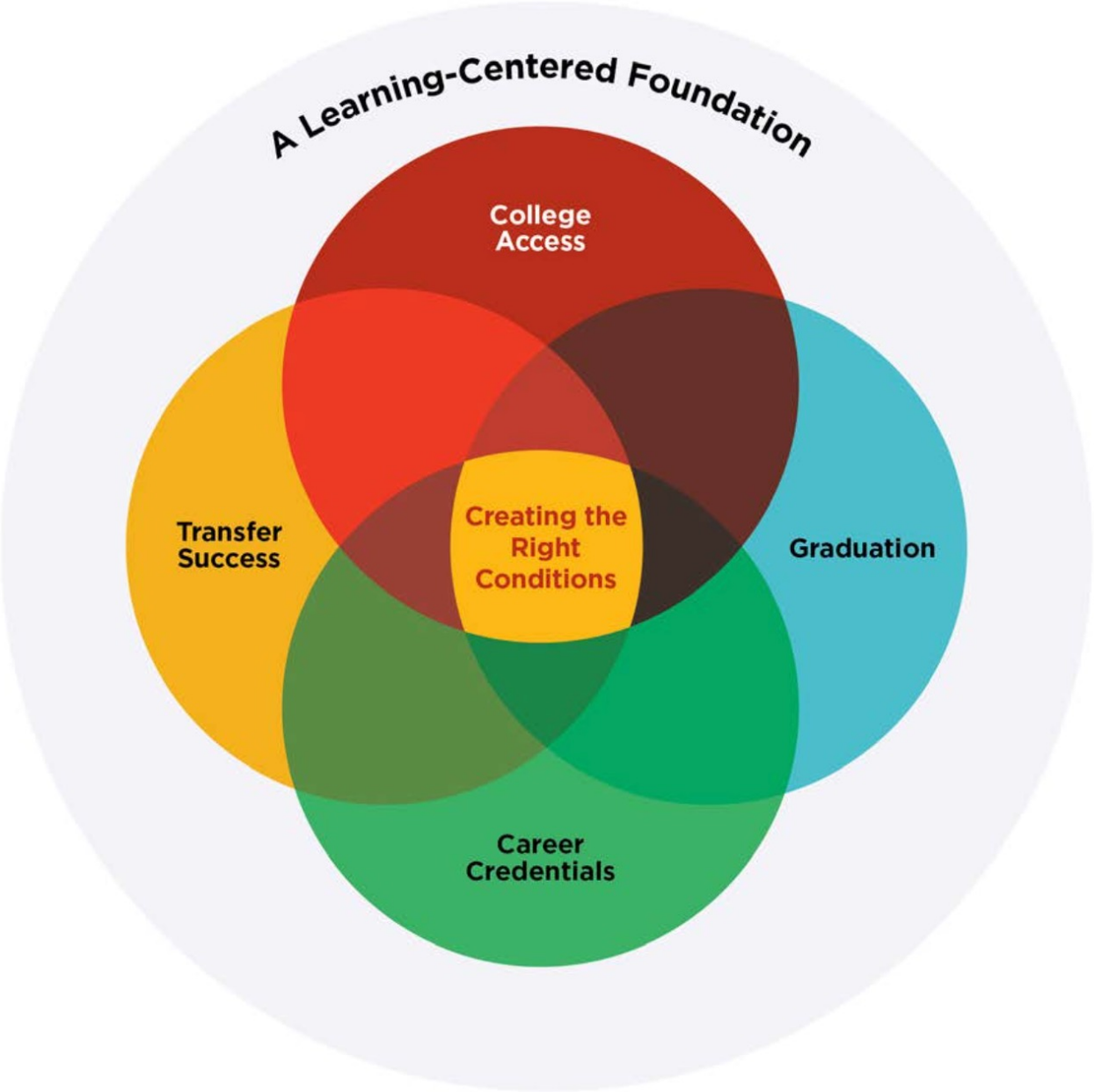


# **2030 Strategic Impact Plan:** College Access

Board of Trustees Meeting  
May 25, 2023

# 2030 Strategic Impact Plan: Goal Areas



# College Access Goal

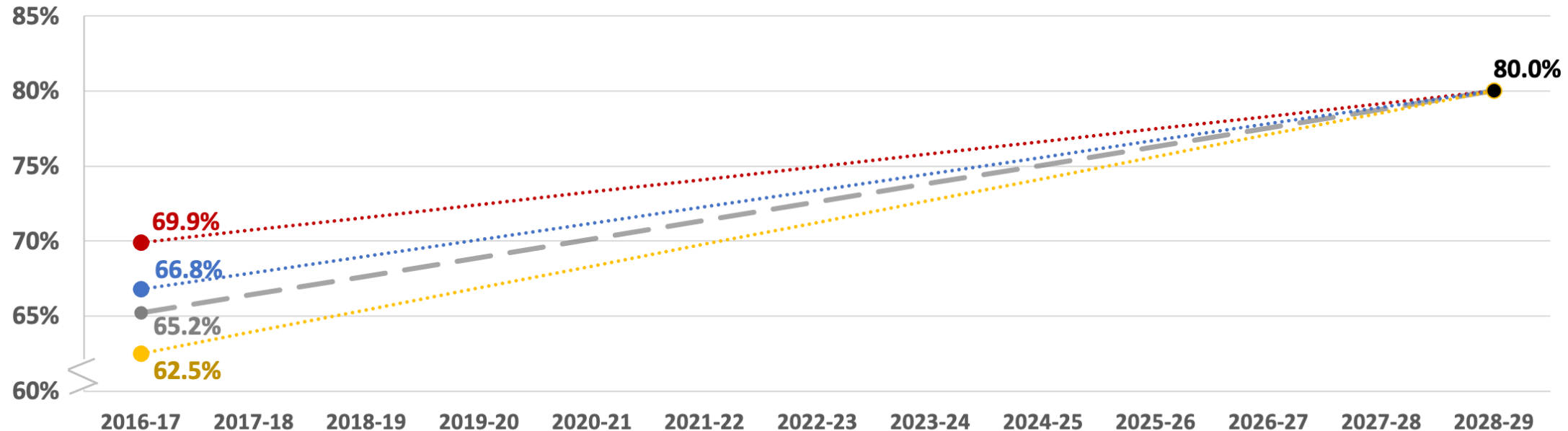
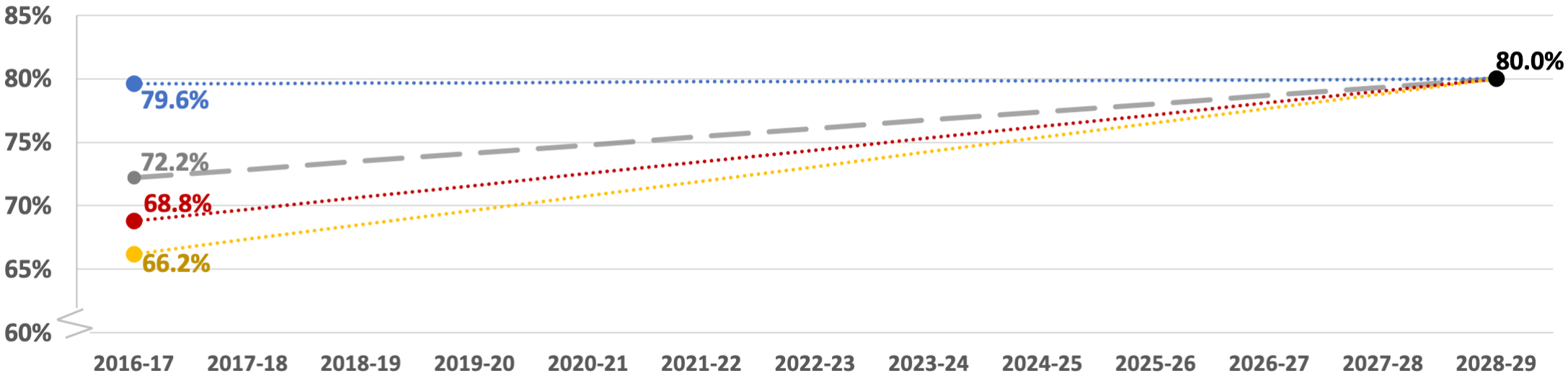
Valencia College will work with community partners to ensure that, by 2030, 80% of Orange and Osceola County high school graduates of each race and ethnicity will attend a post-secondary institution – including vocational or technical school, college or university – in the year following high school graduation.

# College Access Goal: Baseline Visualization

Percentage of Students Enrolled in Postsecondary Institution in Year Following High School Graduation

Orange County

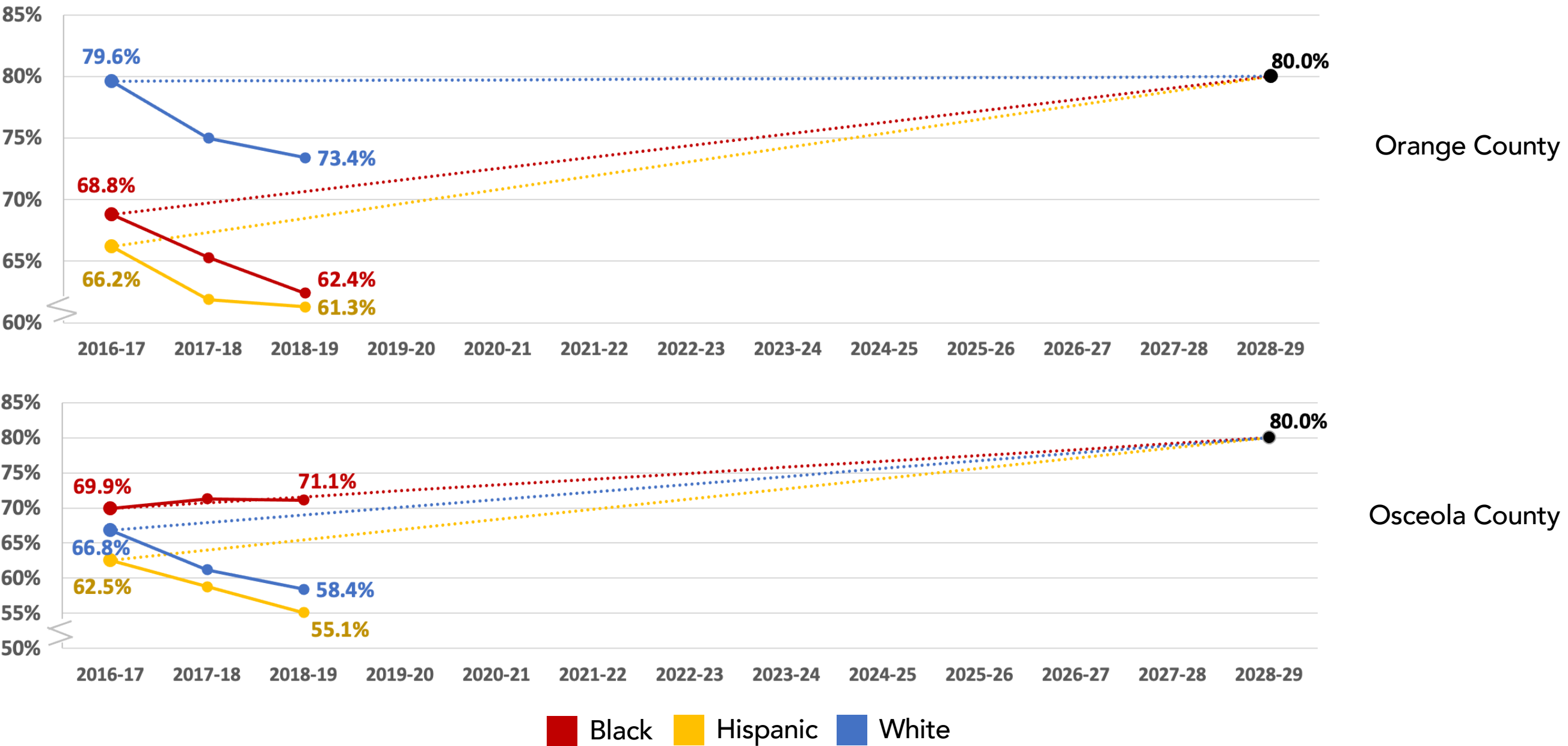
Osceola County



Overall Black Hispanic White

# College Access Goal: Progress Through 2018-19

Percentage of Students Enrolled in Postsecondary Institution in Year Following High School Graduation



Black Hispanic White

# College Access Goal: Leading Indicators

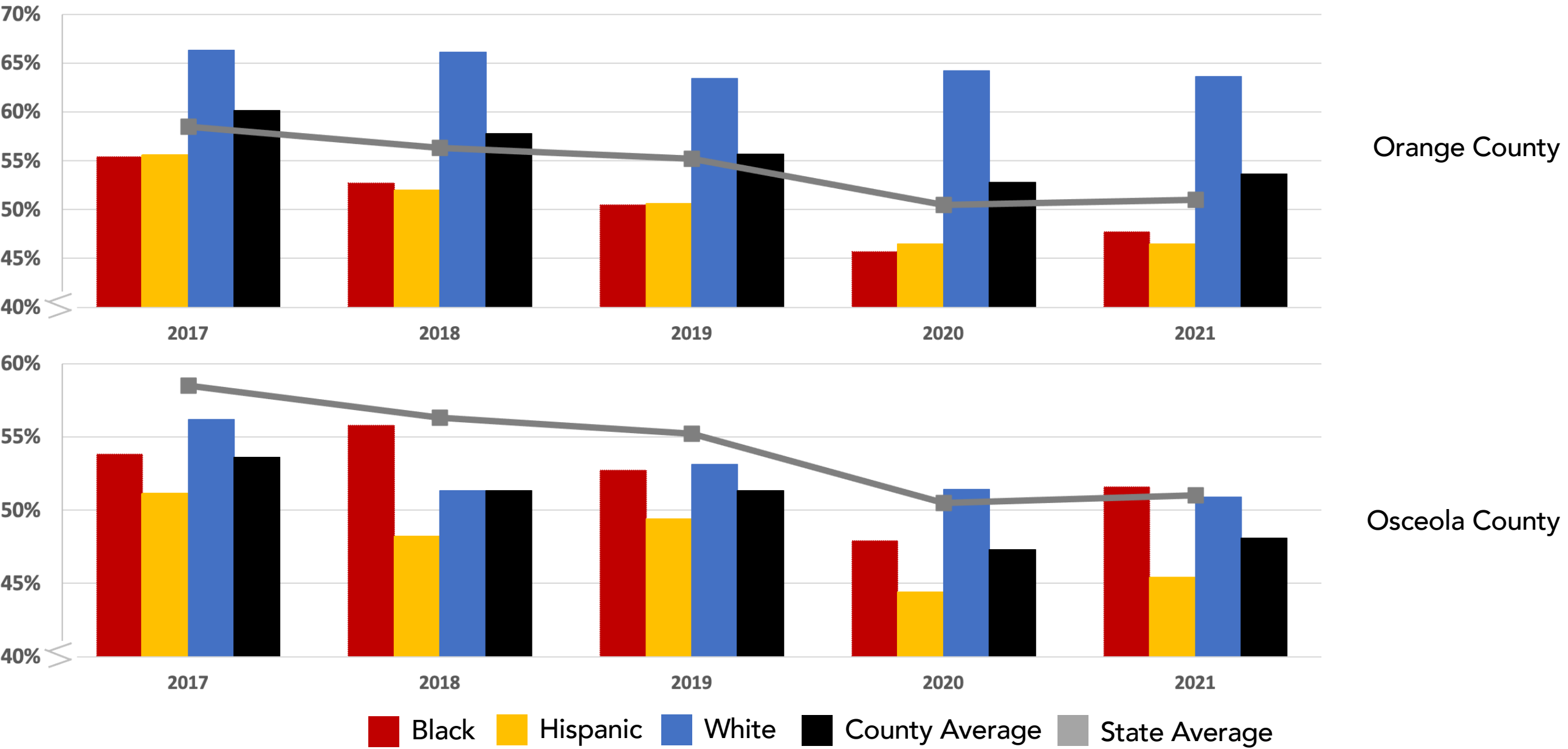
- ❑ Percentage of high school graduates from Orange and Osceola counties enrolled in a Florida college or university
- ❑ Percentage of previous-year high school graduates from Orange and Osceola counties enrolled at Valencia in Fall and Spring semesters
- ❑ Percentage of first-time-in-college applicants who enroll in Fall



Valencia College will work with community partners to ensure that, by 2030, 80% of Orange and Osceola County high school graduates of each race and ethnicity will attend a post-secondary institution – including vocational or technical school, college or university – in the year following high school graduation.

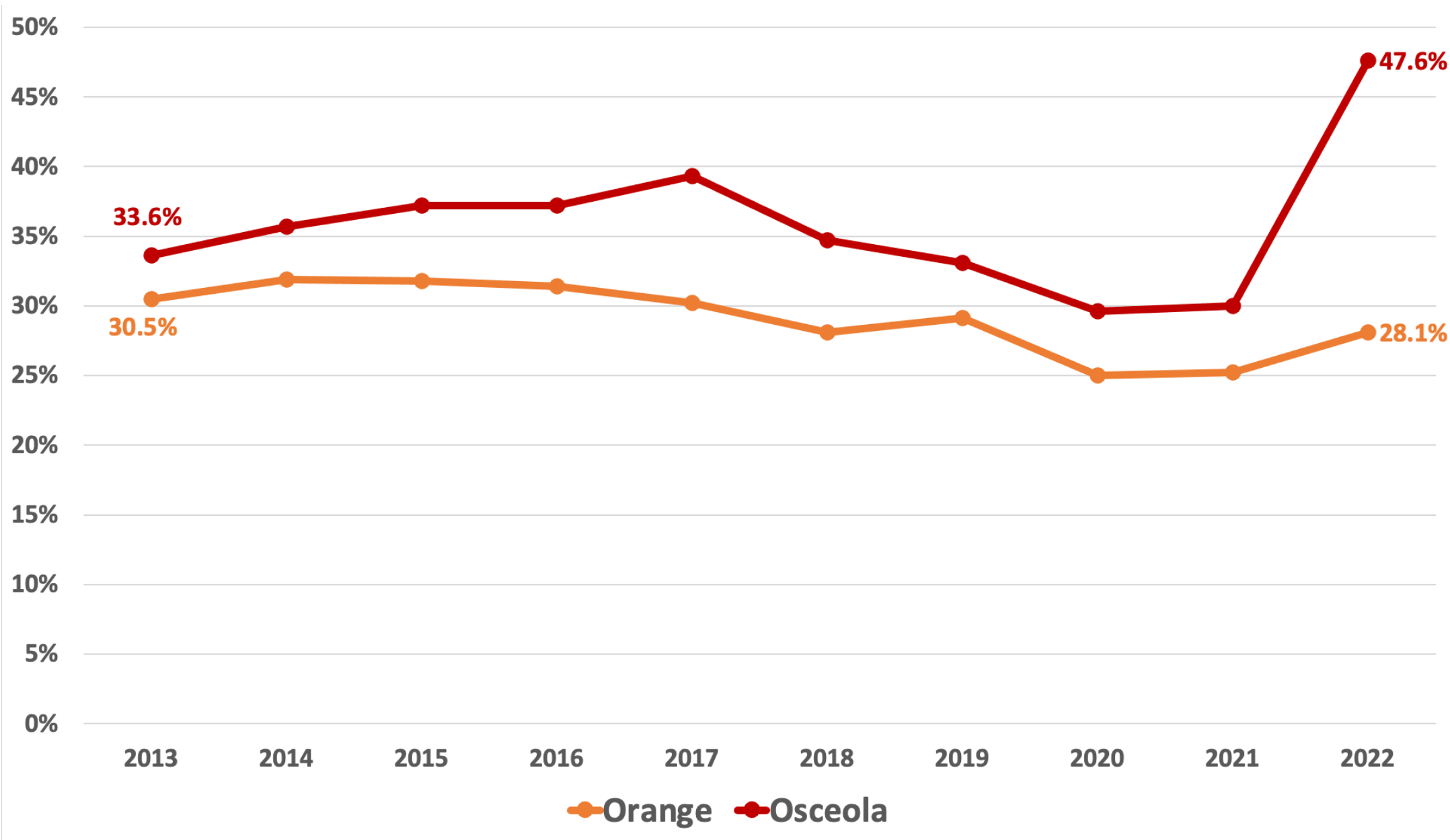
# College Access Goal: Progress Through 2021

Percentage of Students Enrolled in Florida Postsecondary Institution in Year Following High School Graduation



# College Access Goal: Leading Indicator

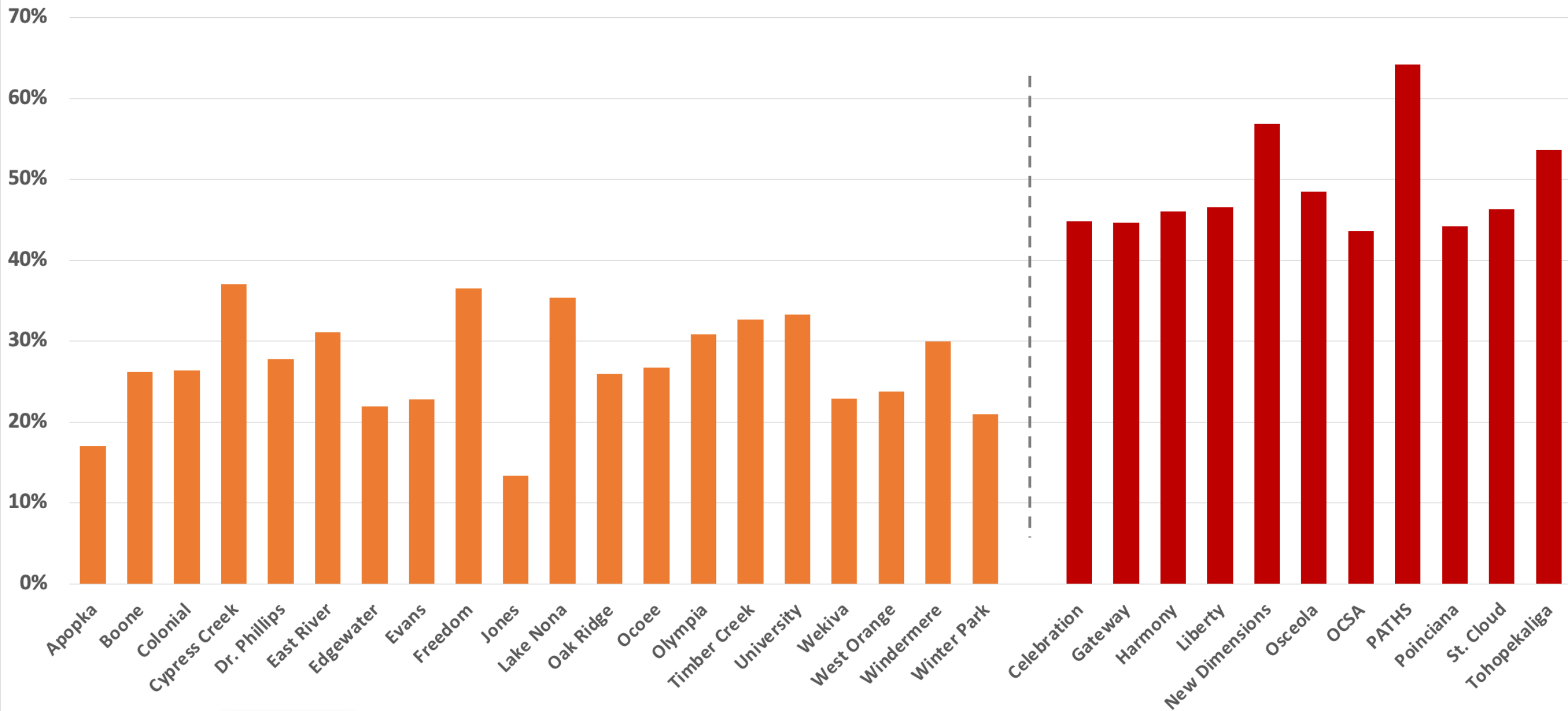
Percentage of Orange/Osceola Public High School Graduates Enrolled at Valencia in Subsequent Fall





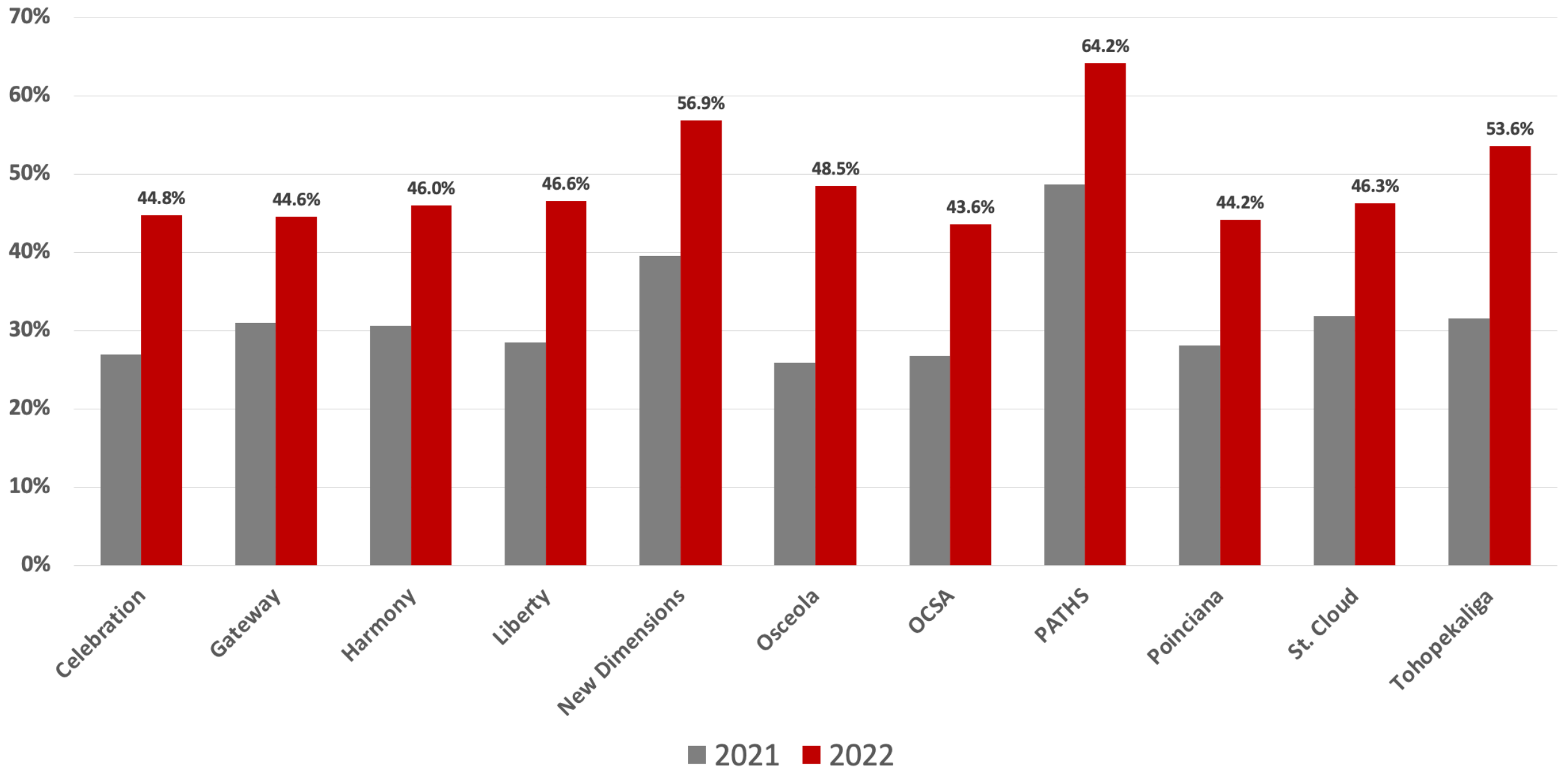
# Impact of Osceola Prosper

Percentage of 2022 Orange/Osceola Public High School Graduates Enrolled at Valencia in Fall 2022



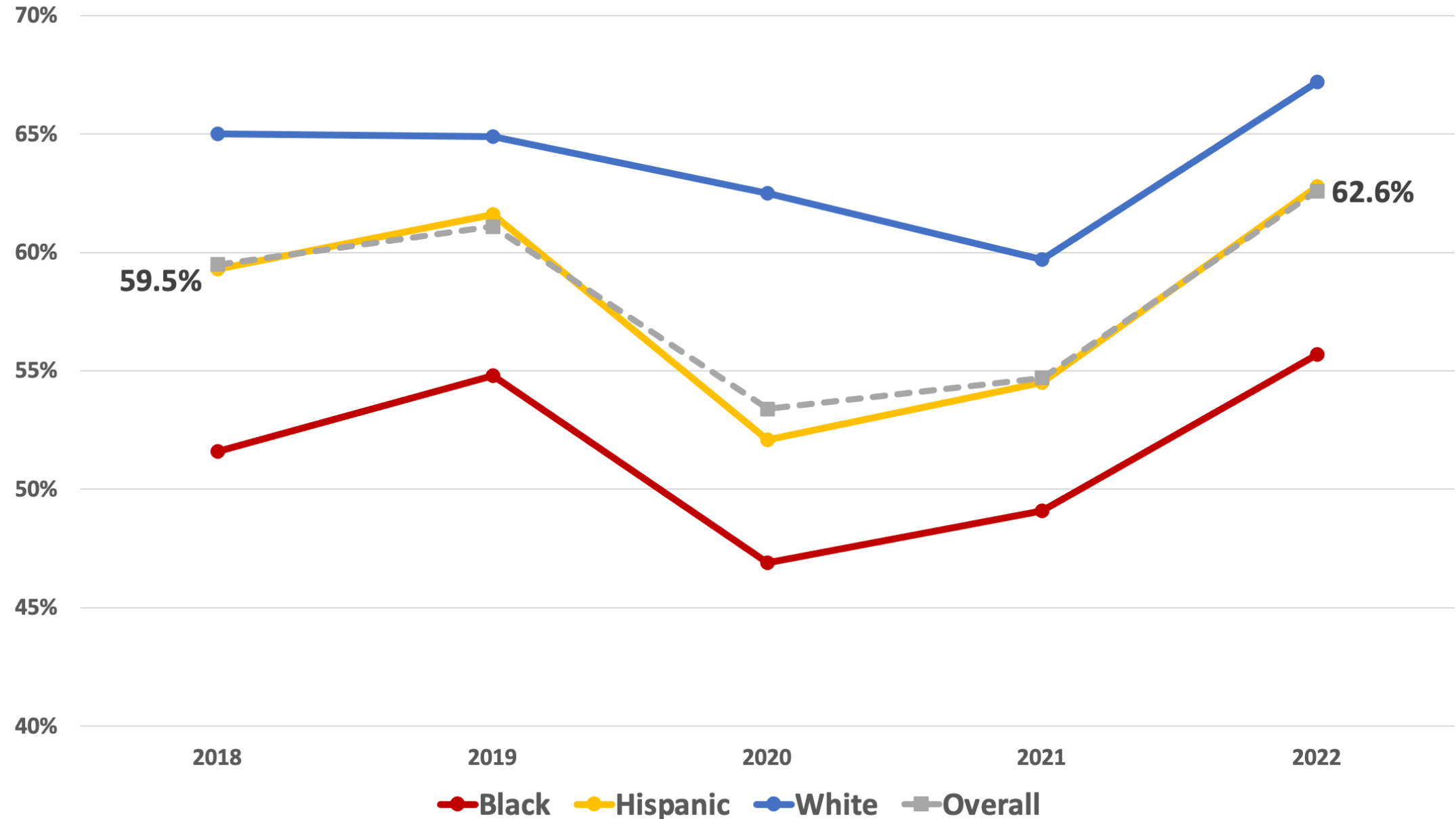
# Impact of Osceola Prosper

Percentage of 2021 and 2022 Osceola Public High School Graduates Enrolled at Valencia in Subsequent Fall



# College Access Goal: Leading Indicator

Percentage of Orange and Osceola County First-Time-In-College Valencia Applicants Who Enrolled in Fall



# Looking Ahead: Future Board Discussion

- Are there policy changes that could significantly increase the number of applicants who enroll at Valencia?
- Which strategic investments in technology infrastructure are most likely to support students in the enrollment process?
- Which investments in our partnerships with our school districts are most likely to increase the number of high school graduates who pursue postsecondary education?
- What philanthropic opportunities exist to increase college access in Orange and Osceola counties?